

Guide for Frequency Tables

Adam G. Fera

February 9, 2018

0.1 Introduction

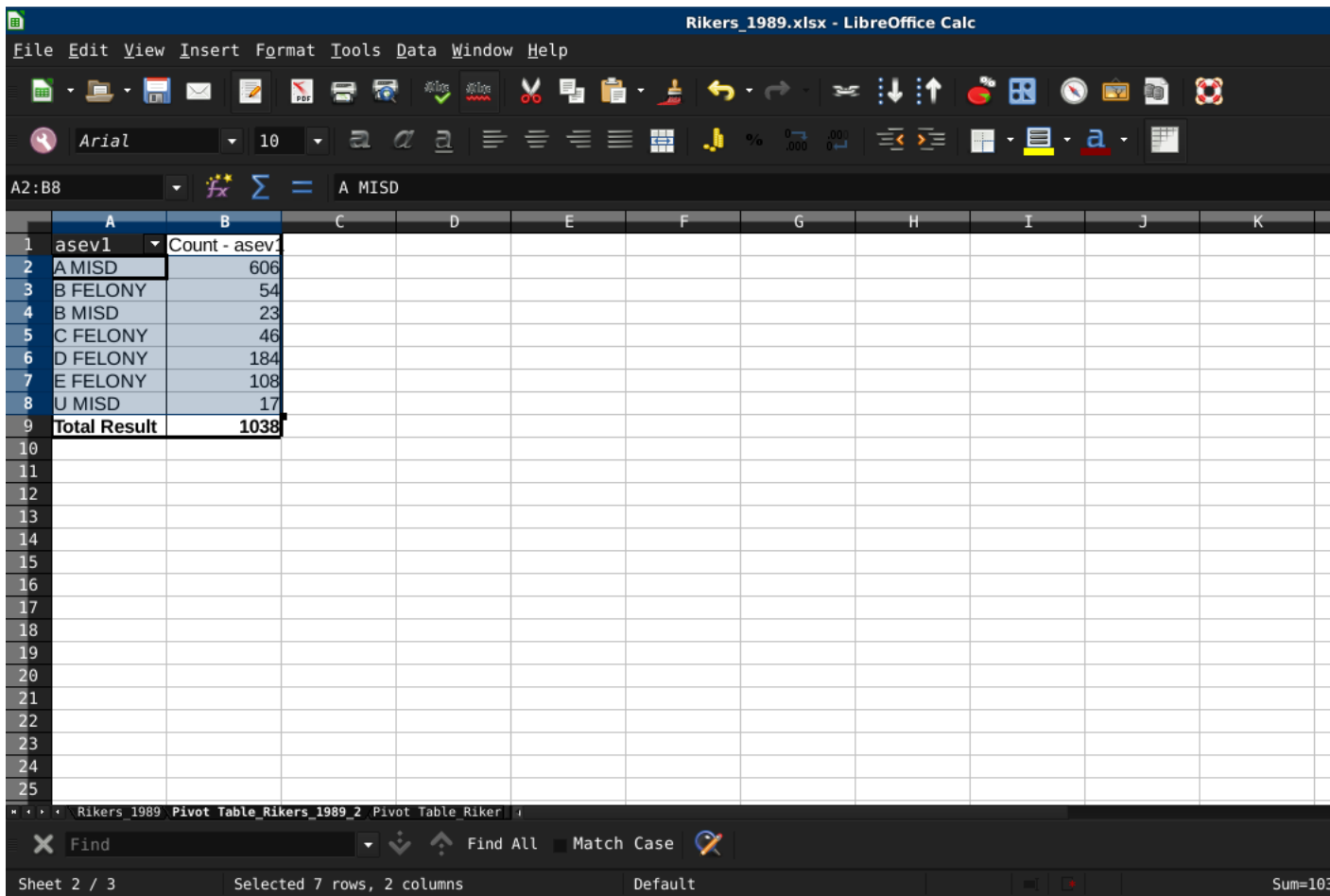
This is a guide for constructing bar charts in a spreadsheet. In order to do this you must follow a series of steps. The end result will be a new chart object displaying the relative frequency of each category in a variable. Bar charts are useful for displaying relative frequencies graphically. They communicate the same information as a frequency table, however they make the relative counts easier to take in than tabular data.

A Bar Chart is used with Nominal or Ordinal level data.

0.2 Step-by-Step Instructions

First, make a frequency table.

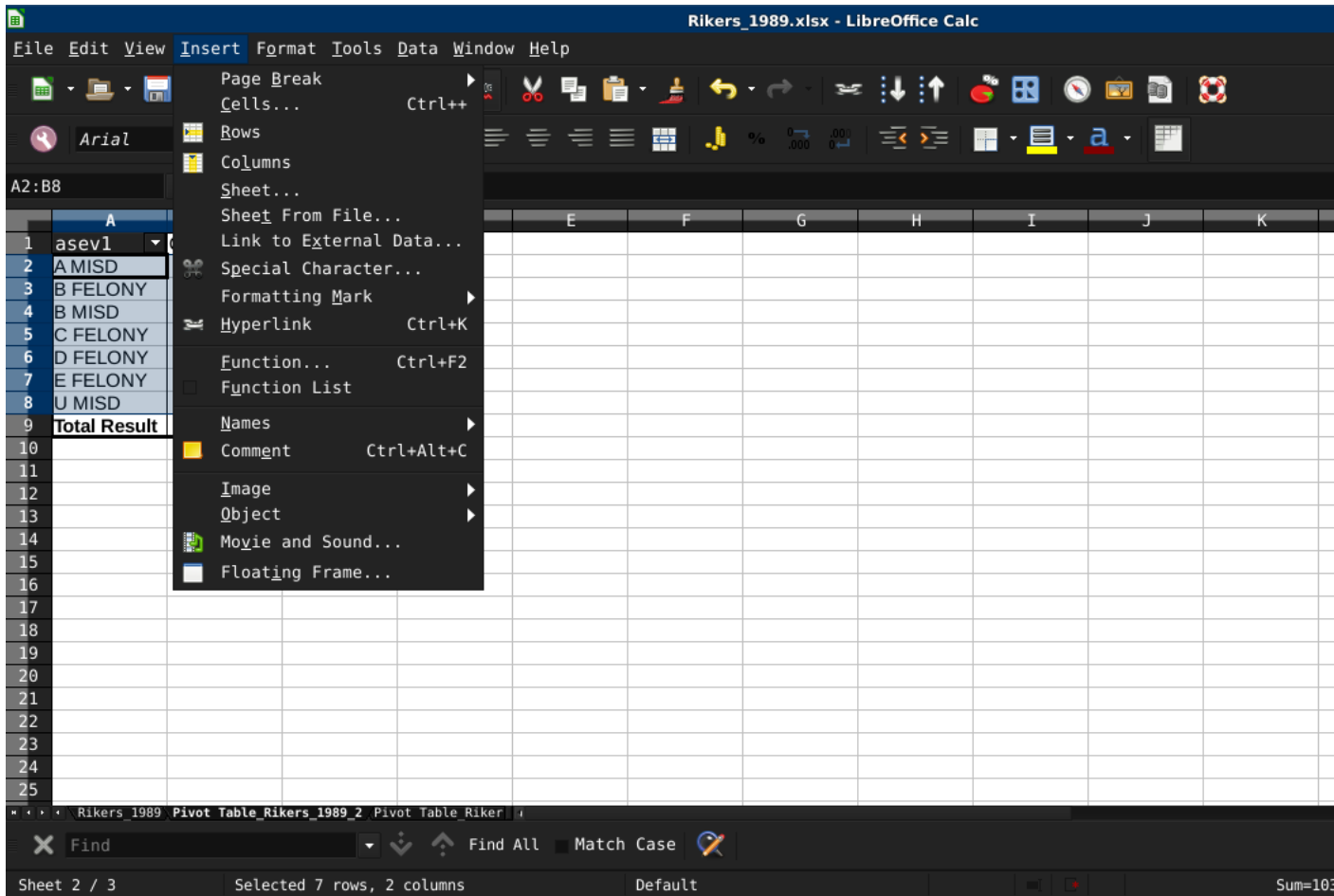
Next, highlight the information in the table that you wish displayed.



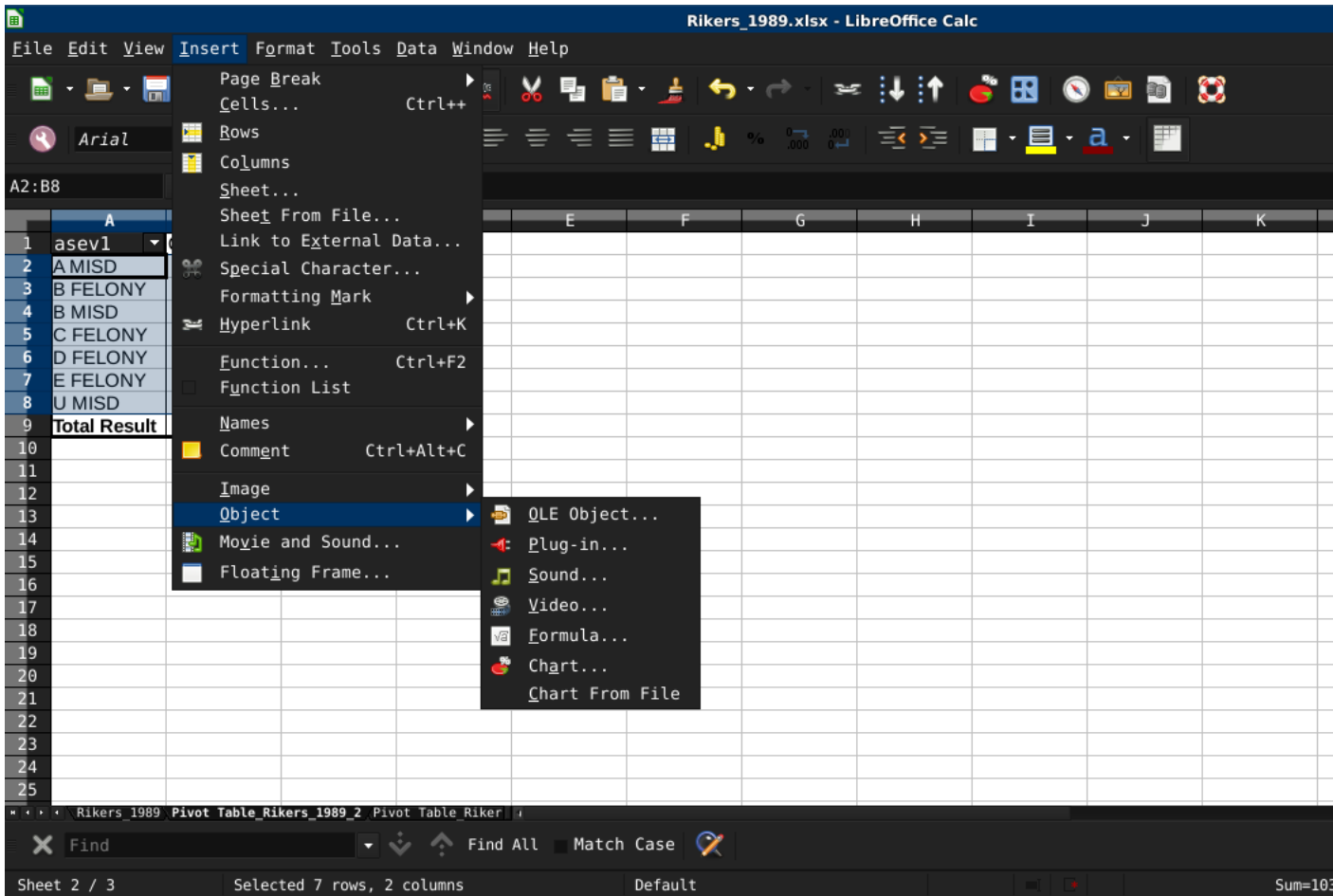
The screenshot shows the LibreOffice Calc interface with a pivot table. The pivot table is located in the range A2:B8. The categories are listed in column A, and the corresponding counts are in column B. The total count is 1038.

| | A | B | C | D | E | F | G | H | I | J | K |
|---|---------------------|---------------|---|---|---|---|---|---|---|---|---|
| 1 | asev1 | Count - asev1 | | | | | | | | | |
| 2 | A MISD | 606 | | | | | | | | | |
| 3 | B FELONY | 54 | | | | | | | | | |
| 4 | B MISD | 23 | | | | | | | | | |
| 5 | C FELONY | 46 | | | | | | | | | |
| 6 | D FELONY | 184 | | | | | | | | | |
| 7 | E FELONY | 108 | | | | | | | | | |
| 8 | U MISD | 17 | | | | | | | | | |
| 9 | Total Result | 1038 | | | | | | | | | |

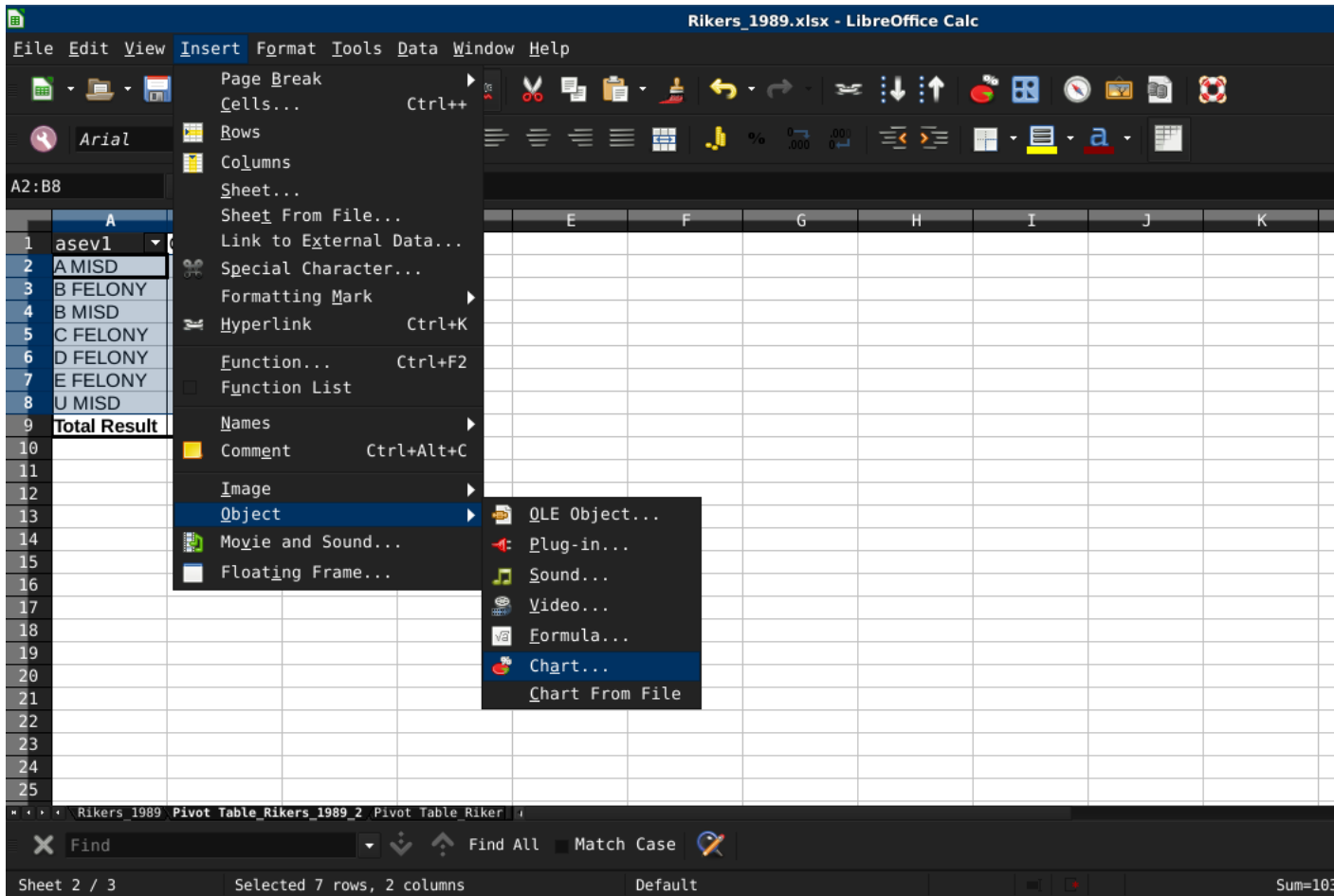
Select "Insert" from the Menu Bar.



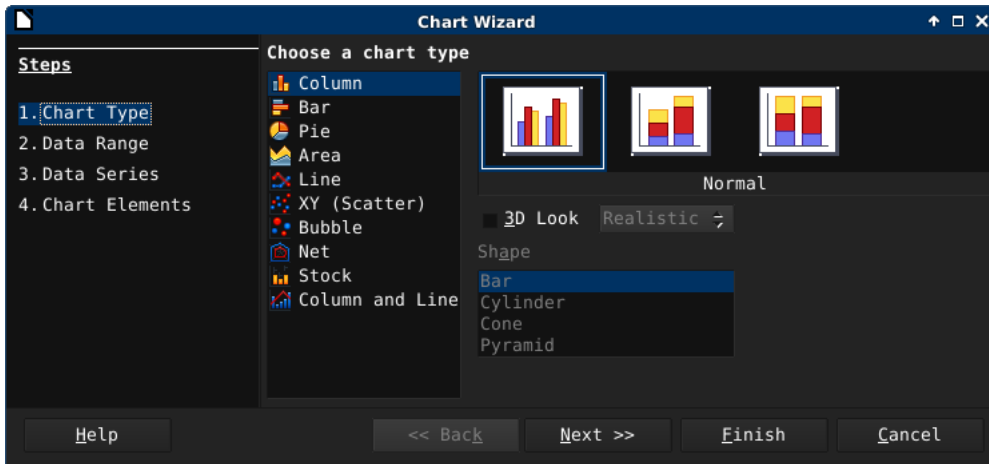
Click on "Object".



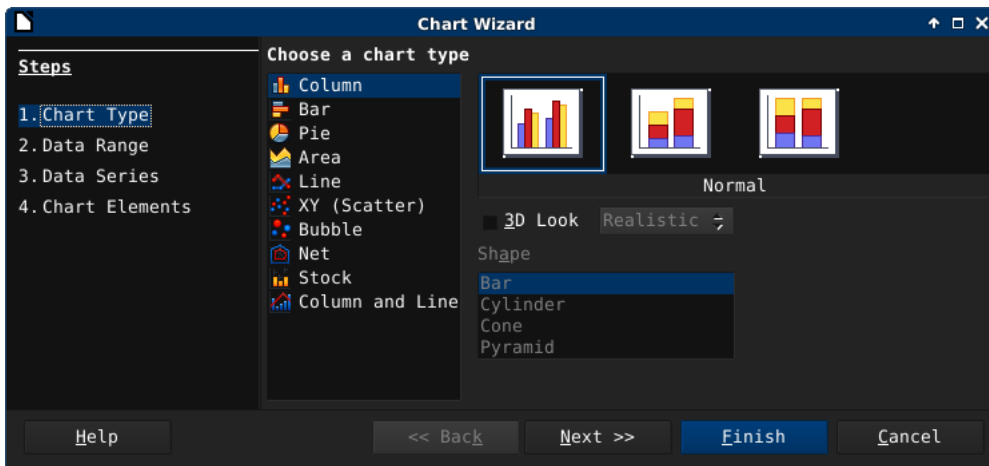
Select "Chart".



Keep default settings for now.



Click OK.



A Bar Chart is produced.

